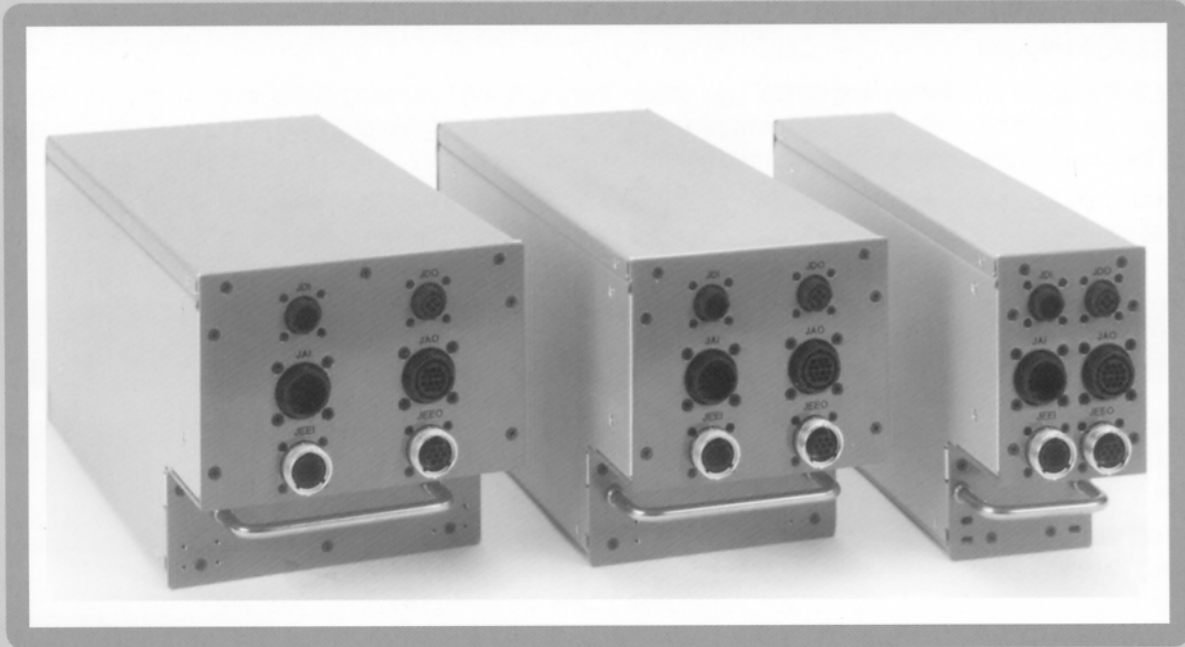


CKT1175 LRU Switching Unit

Distributed Cable/Harness Testing with Line-Replaceable Switching Units



- ❑ ARINC MCU-600 and ATR-404A form factors for direct access into avionic electronic racks.
- ❑ Eliminates the necessity for adapter cables.
- ❑ Perfect for on-aircraft wire testing where accessibility and space is at a premium.
- ❑ Up to 1000 test points per LRU.
- ❑ Up to 40 external energization (EE) relays per LRU.
- ❑ No internal power supplies or DC-to-DC convertors. The 24VDC control voltage is provided by the CKT1175 control unit.
- ❑ No fans or air venting requirements ensure high reliability and exceptional test performance over the long-term.



CK TECHNOLOGIES, INC.

FEATURES AND CHARACTERISTICS

- ❑ Designed to be used with the CKT1175 cable/harness test system, these LRU switching units can be placed up to 500 ft. (150 meters) from the control unit.
- ❑ These LRU switching units conform to ARINC MCU and ATR dimensional specifications, and are available in the complete range of sizes.
- ❑ The LRU's will accommodate up to 1000 test points in order to fully wire the rear-mounted ARINC connectors.
- ❑ Since each LRU will plug directly into an avionic rack, the requirement for adapter cables is eliminated.
- ❑ Each LRU is designed to operate at test voltages up to 1300VDC, and test currents up to 2 amperes at voltages up to 50VDC.
- ❑ There are no internal power supplies, or DC-to-DC converters. The required 24VDC control voltage is supplied from the CKT1175 control unit.
- ❑ Due to the unique architecture and control logic design, there is no internal heat build-up, even when the LRU is in continuous operation. This eliminates the requirement for fans and ventilation openings, thereby keeping the inside of the unit free from outside contamination, maintaining high-performance and reliability levels over the long term.
- ❑ The LRU enclosure is of rugged, aluminum construction. A front panel handle is provided to assist in plugging and unplugging the unit; in addition, captivating clamps are provided to hold the unit in place.

SPECIFICATIONS

Termination Capacity

100 to 1,000 test points in 100 test point increments.

Test Voltage / Test Current

1300VDC/750VAC RMS and 2A at 50VDC.

External Energization (EE)

Up to 40 EE relays rated for 3A at 28VDC. Fused outputs.

Power

Externally supplied 24VDC source.

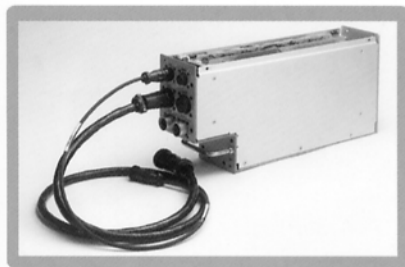
Forced Air Cooling

None required.

Environmental

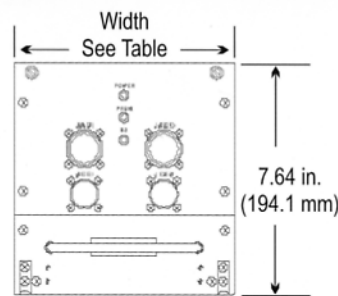
40°F (5°C) to 95°F (35°C)

Up to 80% RH, non-condensing.

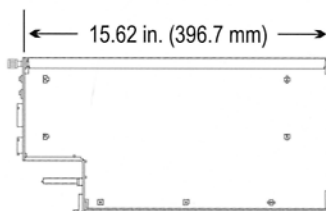


Note: CKT is continuously seeking ways to improve our products. Accordingly, specifications are subject to change without notice.

MECHANICAL DIMENSIONS



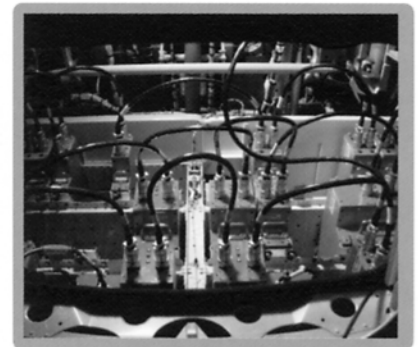
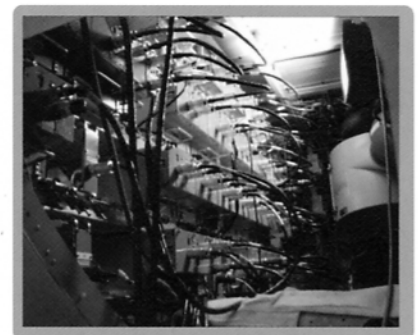
FRONT VIEW



SIDE VIEW

MCU-600	ATR-404A	WIDTH	MAX Test Points
1MCU	N/A	1.00 in (25.4 mm)	N/A
2MCU	¼ ATR	2.25 in (57.2 mm)	200
3MCU	⅓ ATR	3.56 in (90.4 mm)	400
4MCU	½ ATR	4.88 in (124.0 mm)	600
5MCU	N/A	6.19 in (157.2 mm)	700
6MCU	¾ ATR	7.50 in (190.5 mm)	700
7MCU	N/A	8.79 in (223.3 mm)	1000
8MCU	1 ATR	10.09 in (256.3 mm)	1000
9MCU	N/A	11.39 in (289.3 mm)	1000
10MCU	N/A	12.69 in (322.3 mm)	1000
11MCU	N/A	13.99 in (355.3 mm)	1000
12MCU	1½ ATR	15.29 in (388.4 mm)	1000

TYPICAL APPLICATION



CK TECHNOLOGIES, INC.

FACTORY 1033 Business Center Circle
Newbury Park, CA 91320 USA
Telephone: +1.805.498.6787
Facsimile: +1.805.498.2747
E-mail: sales@ckt.com
Web Site: www.ckt.com

UNITED KINGDOM OFFICE Lynley, Walwen Road
Baglitt, Flintshire
England CH66JB
Telephone: +44.(0)1352.710026
Facsimile: +44.(0)1352.710041

GERMANY OFFICE Gnesener Str. 65
D-70374 Stuttgart
Telephone: +49.(0)711.5920432
Facsimile: +44.(0)711.5920431

DISTRIBUTOR / REPRESENTATIVE

